



Services Projects Profile 2023



a software solution design factory



Over 2 Decades

Sustained **growth and stable management**



200+

Highly qualified **Software Engineers, Business Analysts, and Quality Analysts**



100+

Lifetime Clients including mid to large scale **enterprises and government institutions**



#1

Reputation as a **leading Software IT Company** in the region



20+

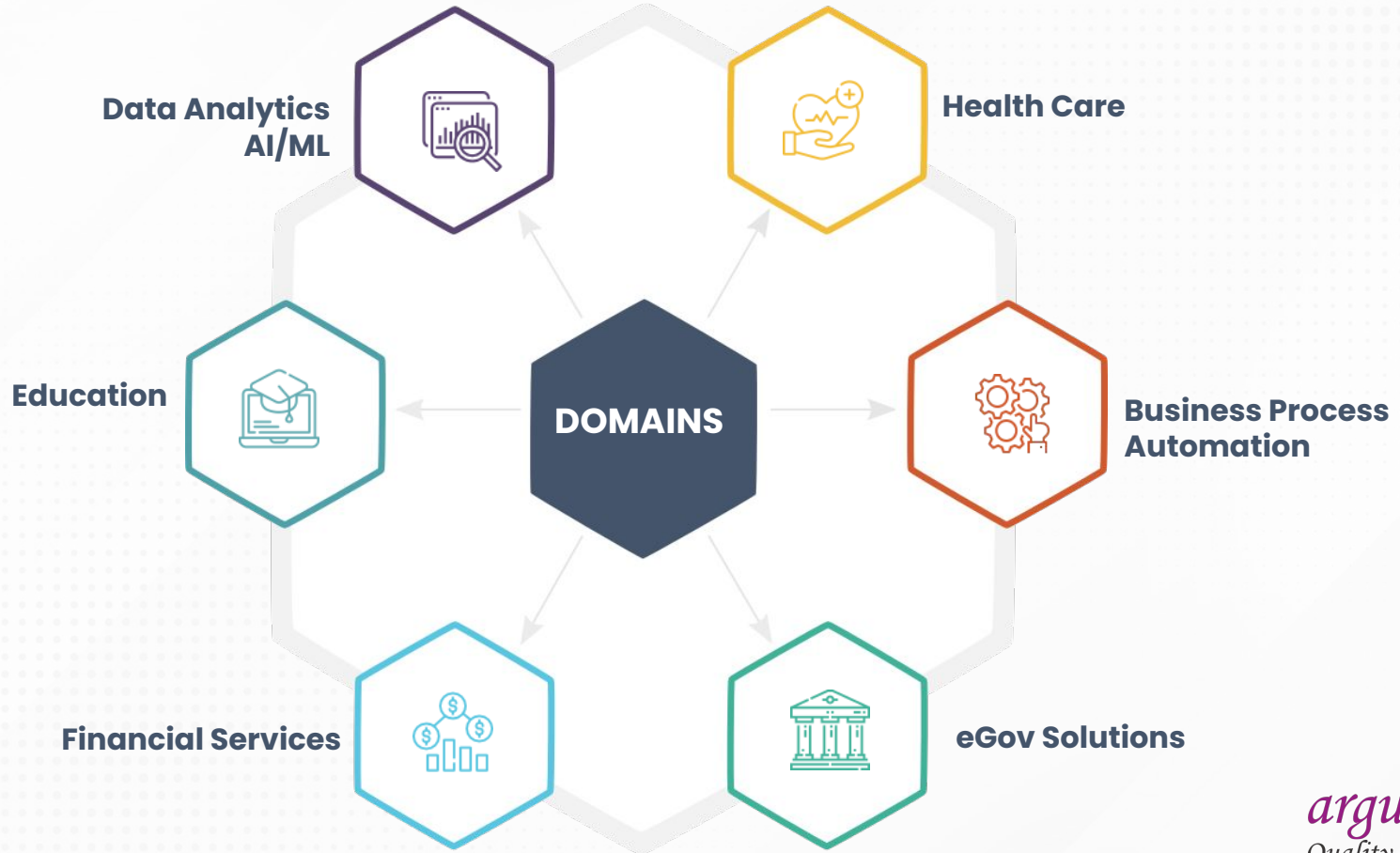
Current Clients Worldwide in **USA, UK, Japan Netherlands, France, Germany, Canada, South Africa, Middle East, Caribbean, India**



<5%

Excellent work culture contributes to **less than 5% attrition**

Our Domain Expertise



Tech Stacks

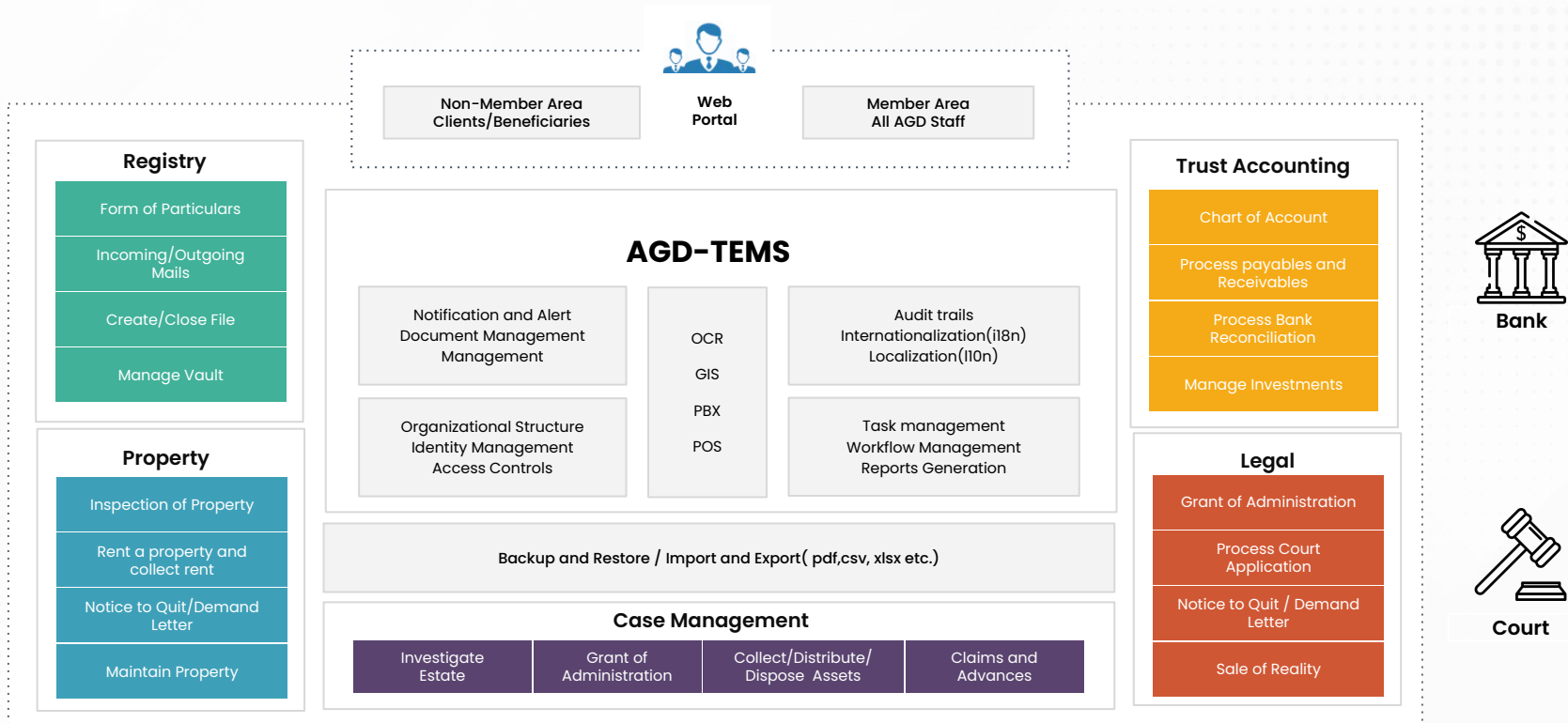


We are largely a full stack house



Turnkey Project – TEMS for Govt of Jamaica

Business Process Automation



Turnkey Project – WHO EWARS

The Early Warning, Alert & Response System



MODC – KPMG SOFY

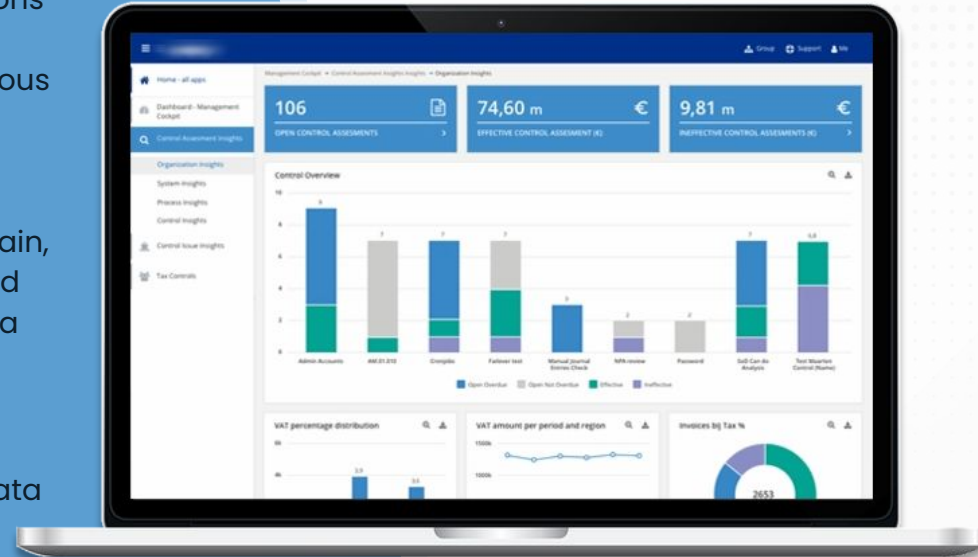
Data Driven Cloud Solutions

KPMG Sofy Suite bundles ready-to-use analytics solutions on a common platform to help clients accelerate their digital ambitions and leverage their data to tackle various business challenges.

The platform has been developed to support several business domains such as Marketing, Retail, Supply Chain, Manufacturing and many others and supports informed decision making in the areas of Risk management, Data Quality as well as process insights.

Features:

- Fuzzy logic based business rules for cleansing data
- Supports over 50 types of charting options
- Fully user customizable dashboards
- Easy interface to set and modify business rules
- What if Scenario generation
- Custom KPI interface with exception call outs.



MODC – Lateral

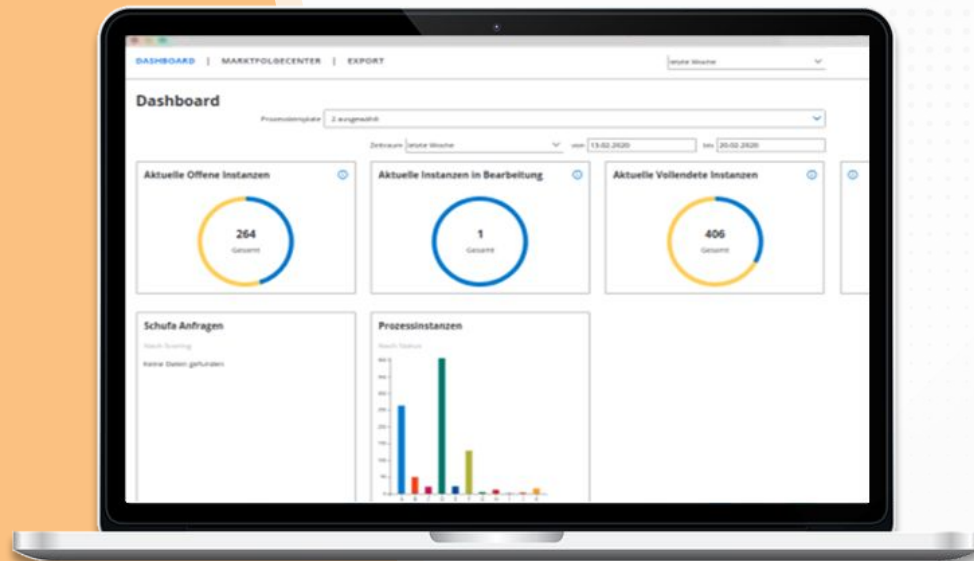
Next Generation Office Automation Software

Lateral offers next generation CRM and Case Management Software focused on serving Legal, Government, Finance, Contact Center and Collections Departments and organisations.

With its powerful A/B testing feature and Machine Learning, the application is truly your Process Optimization Partner.

Features:

- Workflow Automation
- Case Management
- CRM
- Customer Communication
- Credit Control
- Debt Recovery

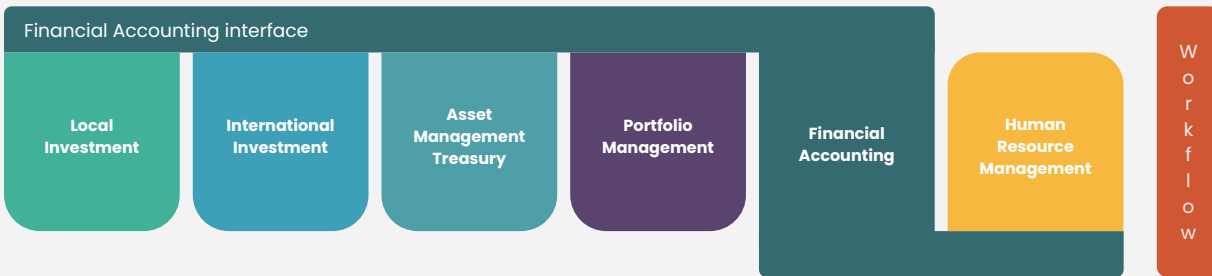


Turnkey Project – eAREF Investment Bank FMS

eAREF is a wholly owned subsidiary of a Kuwait finance house, one of the largest Financial institutions in Kuwait

Developed a complete Enterprise Financial SOA application . Used presently in five other subsidiaries of the group

Enterprise Financial SOA application



Requirement Analysis & Documentation

Created Policies & Procedures document

Design & Development

Deployment & Training

Turnkey Project – Medic Alert ERS

Business Process Automation

**A mid-size 50+ year old,
not-for-profit Medical foundation in
the USA**

Complete Business Process reengineering and development of an Integrated Application using COTS & Custom development

Application Development

Customer Portal Manufacturing Process Call Center
Emergency Response

Application Integration

Integrated with MS CRM & MS GP Several Legacy Apps
WebMethods Integration

Business Continuity & Migration


Smooth transition Full Data Migration 3m records
migrated


- ✓ Completed in about 30 months
- ✓ Reengineered core processes of S&M, CRM and Order Management
- ✓ App integration and SOA ensured that no complete rewrite was required
- ✓ 100 % business continuity ensured


Thank You

Get in touch


USA


 35463 Dumbarton Ct., Newark, CA
94560, USA

 +1-510-435-0567

 info@argusoft.com

India

 A 66, GIDC Sector-25,
Gandhinagar - 382016, Gujarat, India

 +91-814-111-3125

 info@argusoft.com

